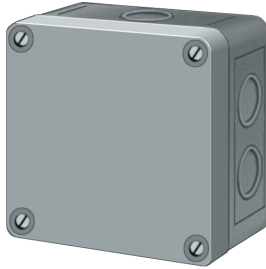


Level Monitors Type NS1

1 Niveau, Wall-mount

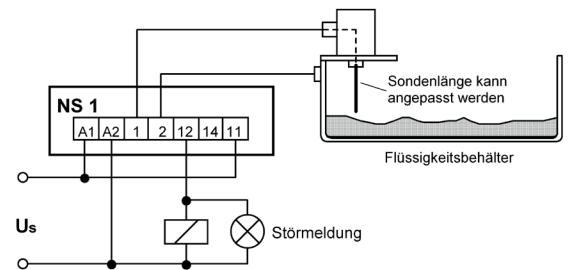
NS1



Part number: V223202

This level monitor for two electrodes preferably serves to the limit control, e.g. as overflow or running dry protection of a conducting liquid. The device is integrated in a shock-resistant plastic housing of the type 94 and can also be used for outside- resp. waterproof mounting according to its protection system IP 54.

The function of the relay is reversible (standard: releases, when E2 is reached) by changing of jumpers in the device. The sensitivity can be changed between 25...250 kOhm and the switching delay between 0,5...10 s.



Technical Data

Supply Voltage U_s	AC 230 V
Adm. Tolerance U_s	+10%...-15%
Power Consumption	≤ 3 VA
Frequency	50...60 Hz
Relays	1 CO
Contact type	Type 2 (see "General technical Informations")
Pick up delay approx.	0,5 s
Release delay approx.	0,5...10s adjustable
Text conditions max. ambient temperature	see "General technical Informations" -20°C...+55°C
Quantity Electrodes	2
Voltage at the Electrodes	< AC 6 V _{eff}
Line capacity	at 25 kΩ max. 100 nF = approx. 500 m at 150 kΩ max. 20 nF = approx. 100 m at 250 kΩ max. 10 nF = approx. 50 m
Dimensions (H x B x T)	Design I 94: 94 x 94 x 57 mm
Fitting position	with screws
Protection housing/ terminals	IP 54/ IP 20
Weight	approx. 310 g